



NZ School Sign Disasters

WiPath Communications is the leading provider of electronic school signs to New Zealand schools. Every now and then, however, schools seek a cheaper price or are taken in by a slick presentation. We see the often disastrous results daily.

The following is provided as a guide to avoiding these problems.

NZ School Sign Disasters



Problems: Wrong technology, really poor construction, bad wiring

NZ School Sign Disasters

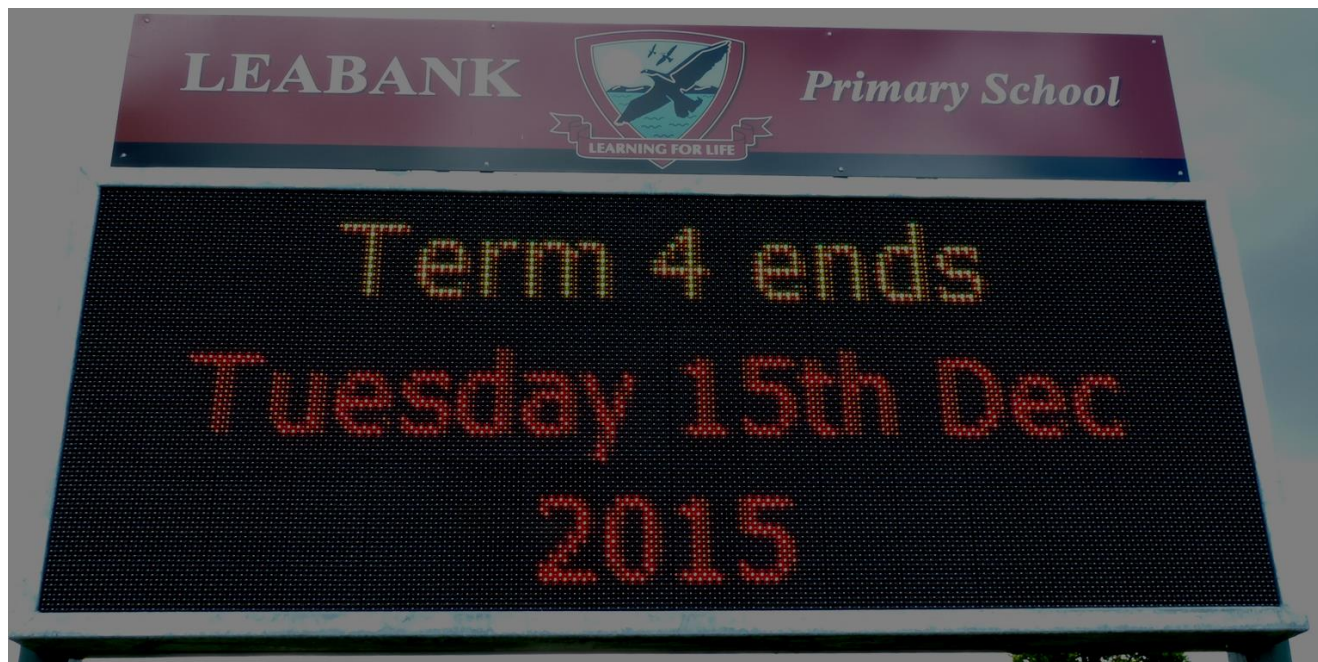


Problems:

Wrong technology: 40mm pitch suitable only for traffic signs – text only
Very poor construction: steel, corroding, duct taped joins, poor joins, perspex not a single piece, screws sticking out, perspex screwed directly into case – weather-tightness compromised, litter behind perspex, wiring a mess, poor ventilation.



NZ School Sign Disasters



20mm pitch, poor text definition, misaligned LED modules.

Cheap construction



NZ School Sign Disasters



Problems:

Insufficient brightness in direct sunlight, case corroding, cheap construction, perspex warped (wrong material used)

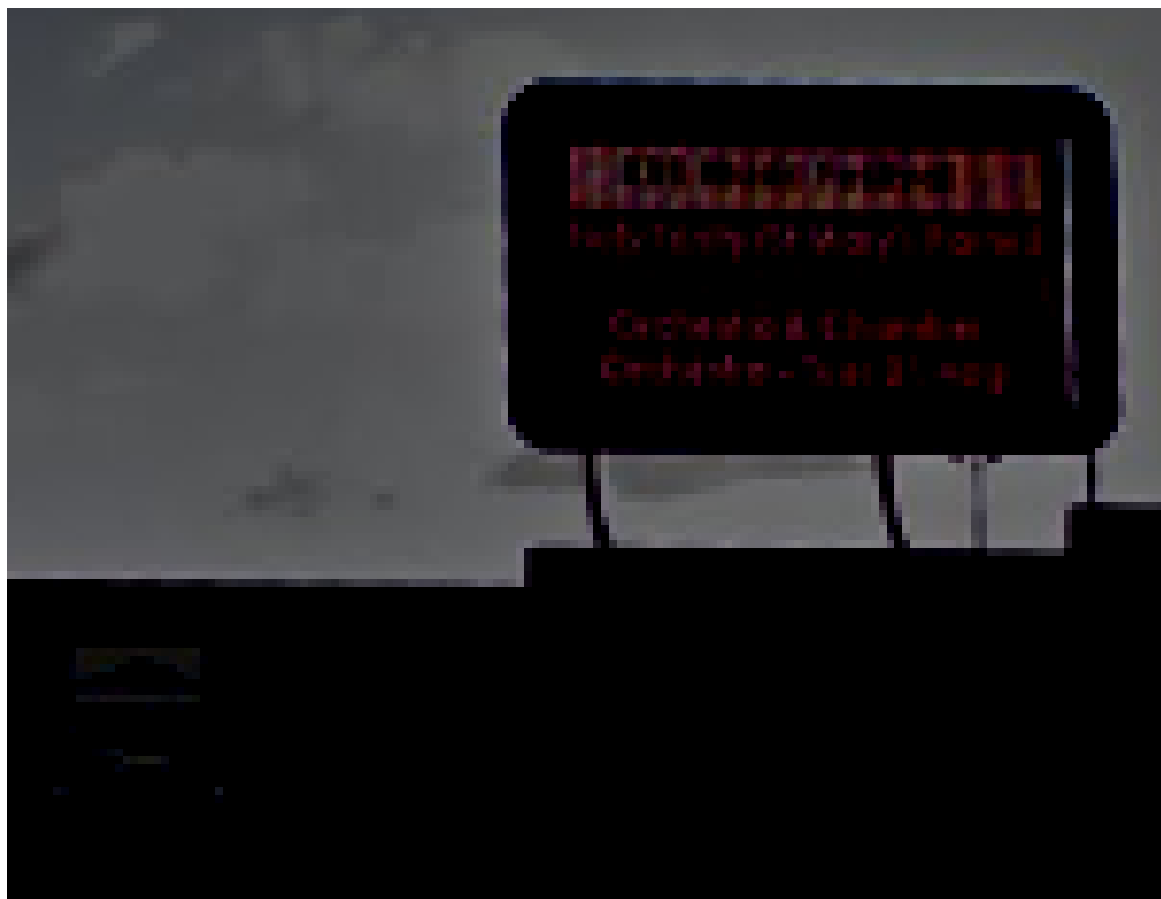


NZ School Sign Disasters



Badly designed sign: LED modules mis-aligned, perspex warped (wrong material used), sign must be removed and disassembled to service.
Suppliers lacked experience.

NZ School Sign Disasters



Comment:

This is a very well constructed sign however the suppliers were not LED sign experts and they made a fundamental error, using the wrong technology for the LEDs, resulting in insufficient brightness in direct sunlight causing the graphics and messages to wash out.

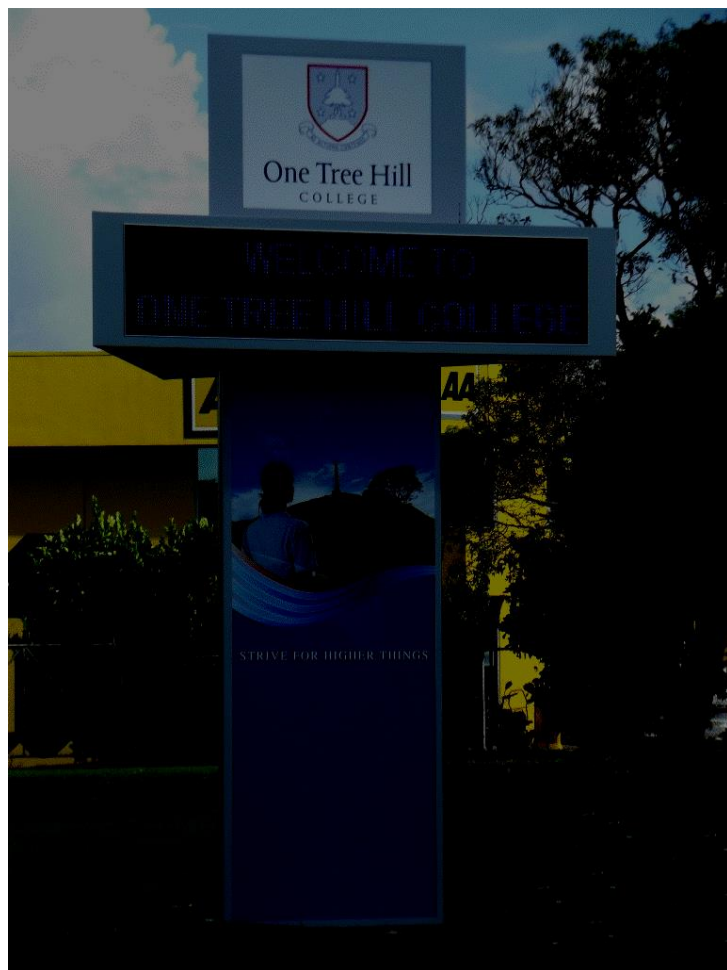


NZ School Sign Disasters



Poor quality LED modules used, missing lines and pixels; School has complained software impossible to use.

NZ School Sign Disasters



An example of poor specification. Sign company ordered mono colour LED signs from us and ignored our advice that the colour should not be used in an outdoor sign. The signs are good quality however the single colour blue does not show up well on a black background and should only be used with a white or coloured background.